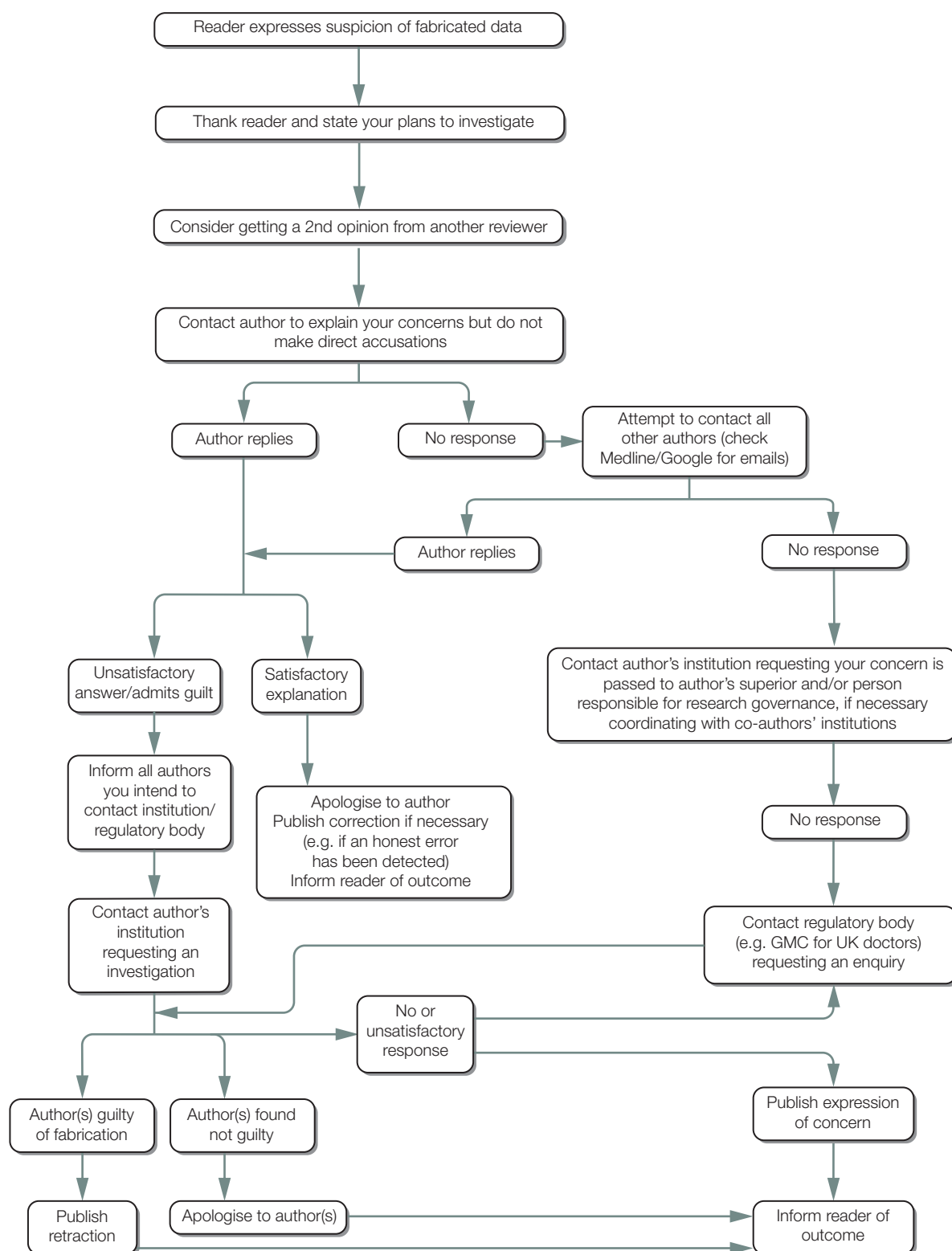


## What to do if you suspect fabricated data (b) Suspected fabricated data in a published manuscript



Developed for COPE  
by Liz Wager of  
Sideview  
(www.lizwager.com)  
© 2013 Committee on  
Publication Ethics  
First published 2006  
Revised May 2011

A non-exclusive  
licence to reproduce  
these flowcharts may  
be applied for by  
writing to:  
cope\_administrator@  
publicationethics.org