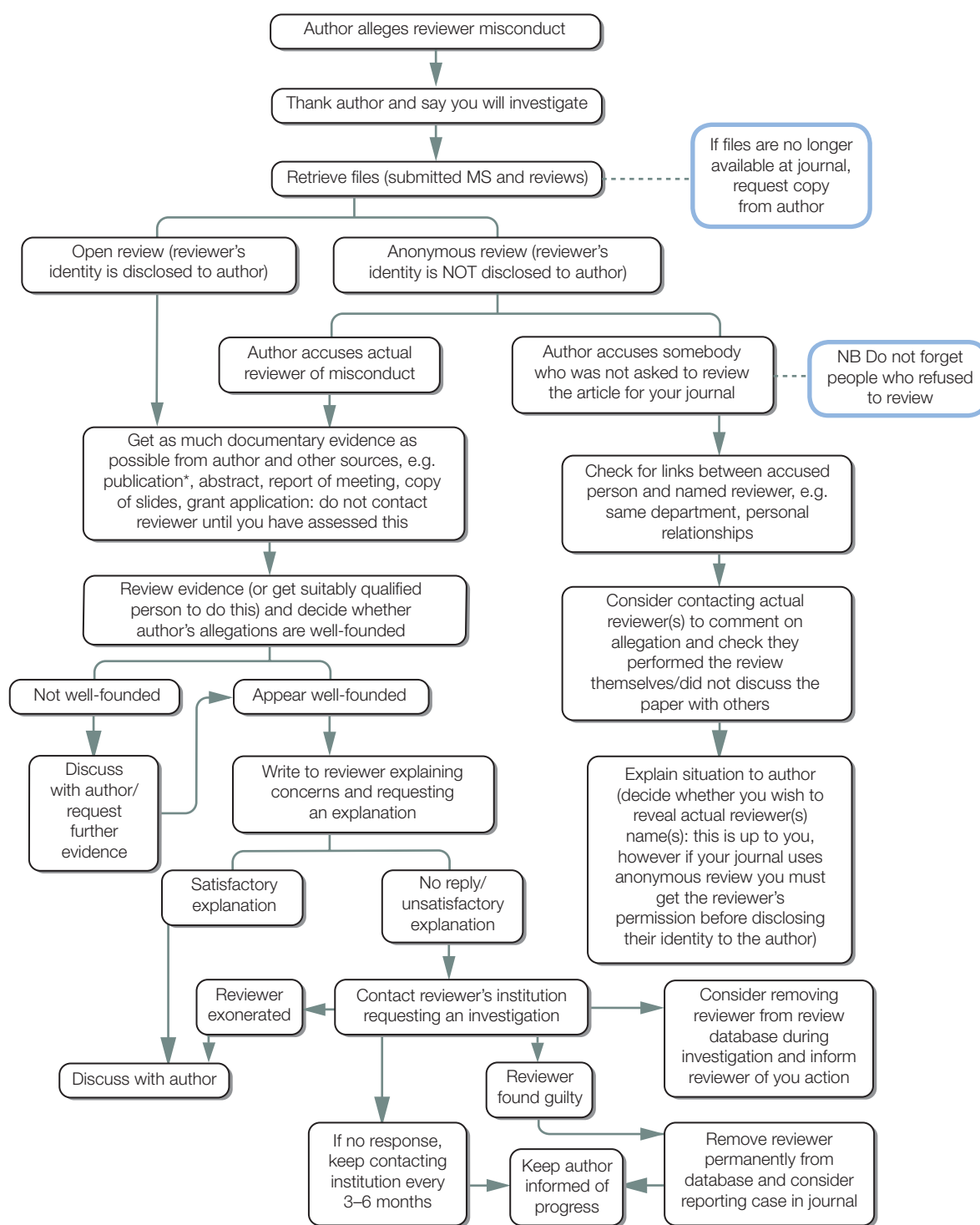


# What to do if you suspect a reviewer has appropriated an author's ideas or data



Note: The instruction to reviewers should state that submitted material must be treated in confidence and may not be used in any way until it has been published

Note: options depend on type of review system used

\*Note: if author produces published paper this may be handled as plagiarism (see plagiarism flow chart)

Developed for COPE by Liz Wager of Sideview (www.lizwager.com) © 2013 Committee on Publication Ethics First published 2006

A non-exclusive licence to reproduce these flowcharts may be applied for by writing to: cope\_administrator@publicationethics.org